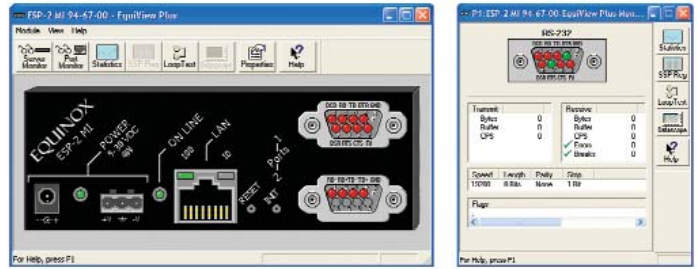
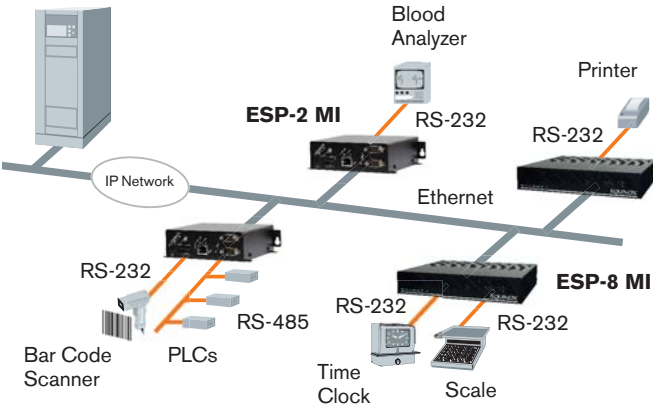




**ESP-2 MI AND ESP-8 MI APPLICATION**

**PORT MANAGEMENT SOFTWARE**



The ESP-2 MI and ESP-8 MI are used in a variety of applications using RS-232, RS-422 and RS-485 protocols. Attach one or more serial devices as needed in your network.

Monitor and manage on a port by port basis serial devices connected to the ESP-2 MI or ESP-8 MI with EquiView Plus™ for Windows and SSDIAG for UNIX.

**TECHNICAL SPECIFICATIONS**

	<b>ESP-2 MI (US)</b> (8-wire)	<b>ESP-2 MI (INTL)</b> (8-wire)	<b>ESP-8 MI</b> (10-wire)	<b>ESP-8 MI Starter Kit</b>	<b>Rack-Mount Shelf</b> (For ESP-8 MI)	<b>DIN-Rail Mount Kit</b> (For ESP-2 MI)
<b>PART #</b>	990458	990460	990407	750133	790180	790226
<b>PRICE</b>	\$ 349	\$ 349	\$ 1095	\$ 35	\$ 75	\$ 30
<b>POWER</b>	9VDC - 30VDC (at less than 4W)		100-250V (0.5A)	N/A	N/A	N/A
<b>CONNECTORS</b>	DB-9 male DTE		(8) RJ-45 DTE	N/A	N/A	N/A
<b>DIMENSIONS</b>	4.38" L 1.62" H 4.74" W		8.00" L 1.75" H 8.75" W	N/A	2U	N/A
<b>SHIPPING WEIGHT</b>	2.00 lbs.		5.00 lbs.	N/A	N/A	N/A
<b>SPEED (Kbps)</b>	230		230	N/A	N/A	N/A
<b>MODEM CONTROL</b>	Full		Full	N/A	N/A	N/A
<b>SURGE SUPPORT</b>	15KV		15KV	N/A	N/A	N/A
<b>OS SUPPORT</b>						
Windows 9X						
Windows NT	●	●	●			
Windows 2000	●	●	●			
Windows XP	●	●	●			
Citrix				N/A	N/A	N/A
Linux	●	●	●			
Novell AIO						
OS/2						
AIX	●	●	●			
SCO UNIX	●	●	●			
SCO OpenServer	●	●	●			
SCO UnixWare	●	●	●			
Sun Solaris-Intel	●	●	●			



**CONFORMANCE**



FCC P. 15 Class A, CE, UL 60950  
3rd Ed.(ESP-8 MI only), CAN/CSA  
C22.2 No. 60950-00

**ENVIRONMENTAL**

Operating temperature: 0° - 40° C  
Humidity: 10% to 90%  
(Non-condensing)

**WARRANTY**

All Equinox ESP Serial Hubs have a five-year warranty.

**FREE PRODUCT EVALUATIONS**

Try any Equinox product FREE for 30-days. Sign-up online or by phone.

**WWW.EQUINOX.COM**

Visit [www.equinox.com](http://www.equinox.com) for additional product information, drivers, manuals, events, technical assistance and much more.