

ESP-8 and ESP-16 Serial Hubs

Serial Ports Over IP: Serial Connectivity At The Point of Need

FEATURES AND BENEFITS

- **Serial Signaling**
Serial signaling support for RS-232
- **Modem Control/Signals**
Full modem control signals on all ports (TXD, RXD, CTS, RTS, DSR, DCD, DTR)
- **High Availability**
Multi-host attachment allows for high availability solutions
- **One Click 'Replace' Option**
Enables the addition of a new unit to the network without reconfiguring installation parameters
- **Structured Cabling**
No more wiring nightmares; structured network cabling provides clean, cost-effective solutions
- **Flexible Port Connectivity**
Connect additional serial ports and new devices in minutes "on the fly"- no need to open your server or interrupt operations
- **Peripheral Sharing**
With peripheral sharing, serial ports are freed from the confines of your server
- **Server Offloading**
Serial hubs place no additional demands on servers for interrupts, power or memory
- **Auto-Sensing**
ESP Serial Hubs support 10/100 Ethernet with auto-sensing

Connect serial devices anywhere on a local or remote LAN segment using ESP Serial Hubs ranging from 8 to 16 port models. It's the ideal solution for connectivity of serial devices over IP.

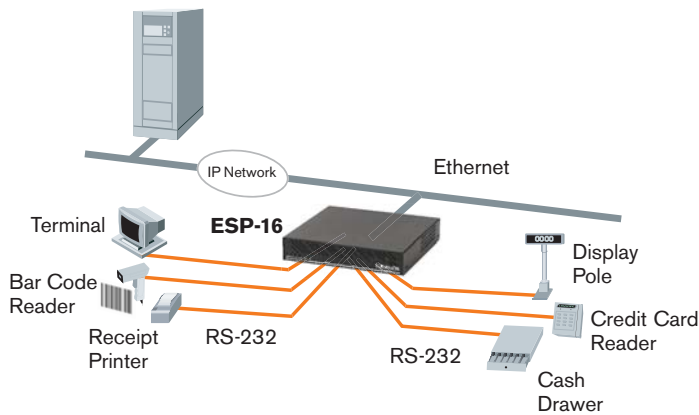
ESP Serial Hubs available in 8 and 16 port models allow you to place serial COM/TTY ports at the point of need, anywhere on a local or remote LAN segment. The ESP Serial Hubs communicate with an Equinox SuperSerial driver located on a Windows, Linux, AIX or SCO system. With the ESP, existing server-based applications have direct access to network-enabled serial devices, as if they were directly attached to the server. Custom applications are not required. The ESP Serial Hubs and the LAN are "transparent."

With ESP Serial Hubs the use of excessive cabling is also eliminated. Networks benefit from cost-effective structured cabling providing cleaner installations. Serial ports and new devices can be connected in minutes "on the fly" and do not require opening your server or interrupting operations. Simply attach the ESP to twisted-pair Ethernet and load the device driver on the server. The ESP Installation Wizard locates and configures the newly attached ESP, giving you full control of COM/TTY port assignments. Ports on the ESP can be assigned to different hosts. Each ESP has an internal universal power supply eliminating the need for bulky external "power bricks."

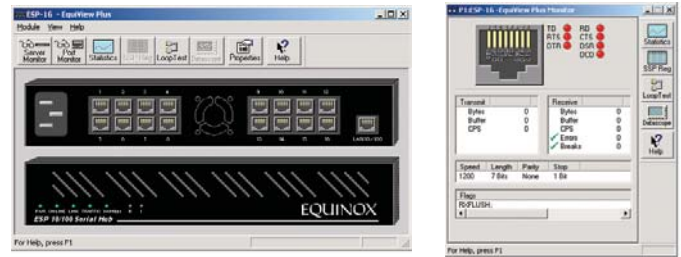
Serial Hubs are designed for versatile support of applications in industrial automation, process control, manufacturing and across a broad range of commercial operations including retail POS, hospitality, back office, medical, security systems and more.



ESP Serial Hubs conveniently integrate RS-232 serial devices into IP-enabled network devices for industrial/manufacturing environments and commercial applications.



ESP Serial Hubs are used in a variety of applications to attach serial devices to your network.



Monitor and manage on a port by port basis every serial device connected to the ESP-8 or ESP-16 with EquiView Plus™ for Windows and ESPDLG for UNIX.

TECHNICAL SPECIFICATIONS

	ESP-8	ESP-16	ESP Starter Kit (For ESP-8 and ESP-16)	Rack-Mount Shelf (For ESP-8 and ESP-16)
PART #	990380	990381	750122	790180
MSRP	\$ 995	\$ 1,295	\$ 35	\$ 75
POWER	100-250V (0.5A)		N/A	N/A
CONNECTORS	(8) RJ-45 DTE	(16) RJ-45 DTE	N/A	N/A
8-wire				
DIMENSIONS	8.00" L 1.75" H 8.75" W		N/A	2U
SHIPPING WEIGHT	5.00 lbs.		N/A	N/A
SPEED (Kbps)	230		N/A	N/A
MODEM CONTROL	Full		N/A	N/A
SURGE SUPPORT	15KV		N/A	N/A
OS SUPPORT				
Windows NT	●		N/A	N/A
Windows 2000	●			
Windows XP	●			
Citrix	●			
Linux	●			
AIX	●			
SCO OpenServer	●			
SCO UnixWare	●			
Sun Solaris-Intel	●			



CONFORMANCE



UL 60950, FCC P. 15 Class A, CE, IEC CB Scheme, CAN/CSA C22.2 No. 60950-00

ENVIRONMENTAL

Operating temperature: 0° - 40° C
Humidity: 10% to 90%
(Non-condensing)

WARRANTY

All Equinox ESP Serial Hubs have a five-year warranty.

FREE PRODUCT EVALUATIONS

Try any Equinox product FREE for 30-days. Sign-up online or by phone.

WWW.EQUINOX.COM

Visit www.equinox.com for additional product information, drivers, manuals, events, technical assistance and much more.