

ALLOY-1440 FIBRE NETWORK ADAPTER

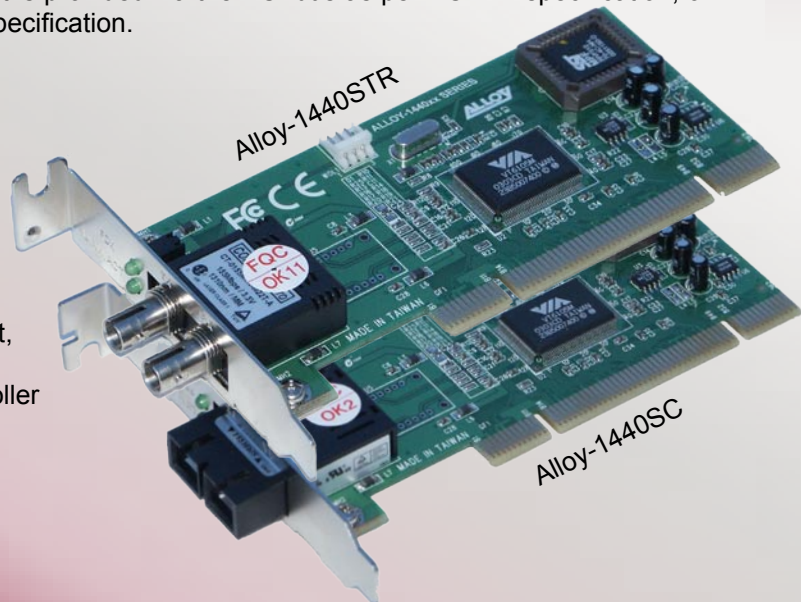
The Alloy-1440 is a 100Mbps PCI fibre optic network card designed for modern high reliability managed fibre networks. The adapter is compliant to PCI 2.2 and will support PCI buses with either 5V, 3.3V or dual voltage standard PCI, 64Bit PCI or PCI-X slots. The Alloy-1440 uses a low profile PCB and is supplied with full height and low profile (half height) interchangeable brackets to ensure support for the vast majority of workstations and servers. A wide range of fibre termination options are supported with SC, ST, Ruggedised ST, MT-RJ and LC in Multimode, and several variations in single mode.

The Alloy-1440 is based on the Via 6105M Rhine chipset which provides Advanced Management and Power Conservation Features. The Via Rhine Chipset enables configuration of advanced features such as Priority Queuing to increase multimedia transfer speeds, VLAN tagging for security, TCP/UDP checksum offloading from the host CPU and adaptive interrupt handling to handle heavy network loads more efficiently. Advanced power management features include low power consumption from the 0.22 micron designed Via 6105M controller.

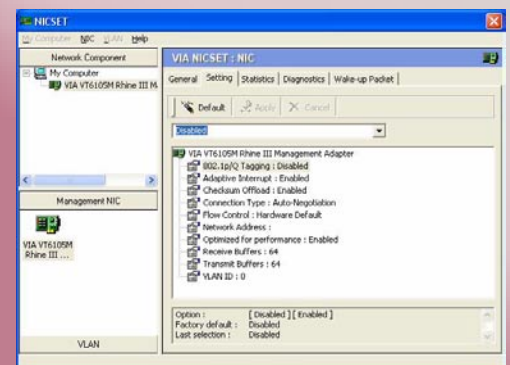
The adapter also supports a remote boot rom socket which can be use with an optional PXE rom for remote booting from Windows based RIS servers. Wake on LAN (WoL) support is provided via the PCI bus as per PCI 2.2 specification, or via a provide cable for motherboards of PCI 2.1 or older specification.

KEY FEATURES

- ✓ Various fibre optic interface options
- ✓ Low profile PCB, supplied with full height and low profile (half height) interchangeable brackets
- ✓ Dual voltage 3.3V/5V PCI support. Supporting PCI-32bit, 64bit and PCI-X slots
- ✓ Single chip 100Mbps Fast Ethernet management controller (VIA 6105M)
- ✓ IEEE 802.3u 100BASE-FX Standards Compliant
- ✓ 32bit PCI Bus-Master Interface
- ✓ VIA Rhine based CSR definition provides efficient PCI bus-mastering
- ✓ Enhanced MAC functions for 802.3 networking
- ✓ 802.1 Priority Transmit + maximum of eight programmable priority queues
- ✓ 802.1q multiple VLAN support
 - + VLAN long frames support (1518+4bytes)
 - + VLAN tag auto inserting and extracting on TX and RX side
 - + Optional auto filtering on VLAN ID
- ✓ IP header checksum offload supported on IPv4 frames. Support both of TCP and UDP protocols
- ✓ Support for physical, broadcast, and multicast address filtering using both, hashing table look-up and perfect-match mechanisms
- ✓ 12 sets of hardware 16 bit MIB counters
- ✓ WFM 2.0 compliant
- ✓ DMI 2.0 (H/W)



Remote Management utility



On-line brochures available for related products: <http://www.alloy.com.au/Resource.asp>
 *Managed Switches *Converters *Network Adapters *Fibre Optic Networking and much more

Alloy Computer Products (Aust) Pty Ltd
 ABN 41 006 507 473

Address: 4/585 Blackburn Road Notting Hill VIC, 3168, AUSTRALIA
 Tel: +613 8562 9000 Fax: +613 9561 7412
 Email: alloy@alloy.com.au Web: www.alloy.com.au

